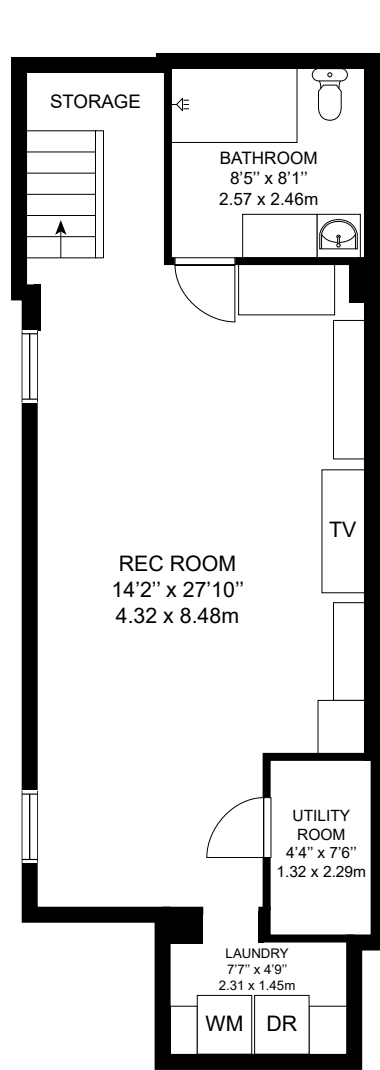
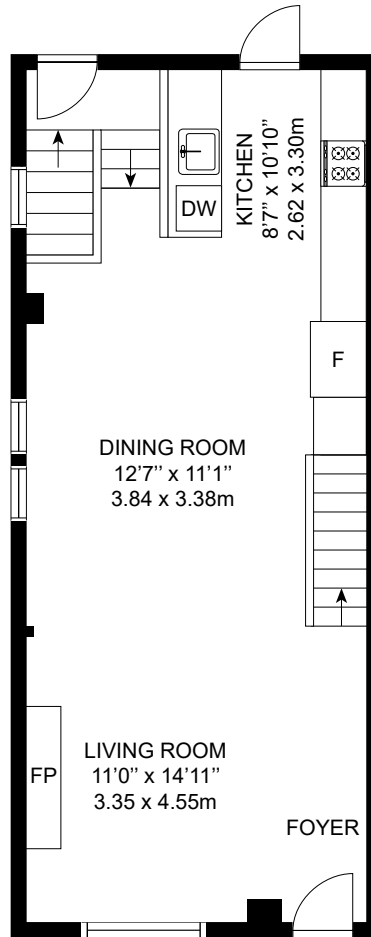


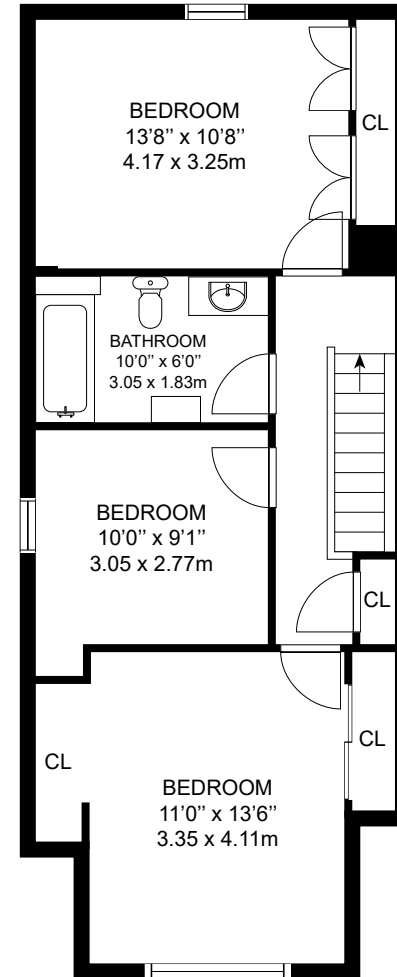
82 GLENMOUNT PARK RD, TORONTO, ON



LOWER LEVEL



MAIN LEVEL



2ND LEVEL

GROSS INTERNAL AREA
 LOWER LEVEL: 660 sq. ft, MAIN LEVEL: 630 sq. ft
 2ND LEVEL: 705 sq. ft
 TOTAL: 1995 sq. ft, 185 m²

MEASUREMENTS AND CALCULATIONS ARE APPROXIMATE, TO BE USED AS LAYOUT GUIDELINES AND ILLUSTRATIVE PURPOSES ONLY. ACTUAL MAY DIFFER.